



Chiltern Road

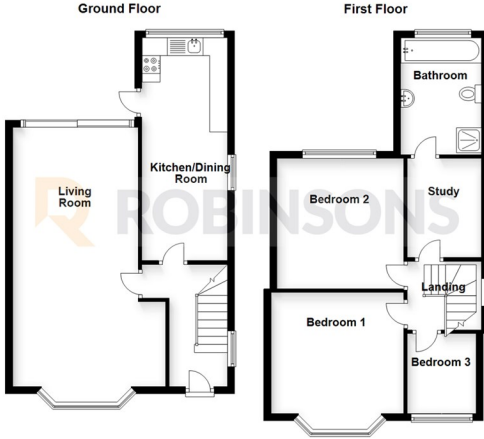
Dunstable, LU6 1ES

Asking Price £400,000

- DETACHED
- EXTENDED
- WEST DUNSTABLE
- THREE BEDROOMS
- POTENTIAL TO EXTEND FURTHER
- CHAIN FREE
- DRIVEWAY
- BAY FRONTED
- STUDY
- CLOSE TO ALL LOCAL AMENITIES



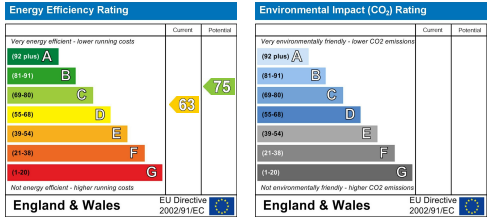
Floor Plan



Area Map



Energy Efficiency Graph



These particulars, whilst believed to be accurate are set out as a general outline only for guidance and do not constitute any part of an offer or contract. Intending purchasers should not rely on them as statements of representation of fact, but must satisfy themselves by inspection or otherwise as to their accuracy. No person in this firm's employment has the authority to make or give any representation or warranty in respect of the property.

20 West Street, Dunstable,
Bedfordshire, LU6 1SX

20 West Street, Dunstable,
Bedfordshire, LU6 1SX

robinsons-estates.co.uk
sales@robinsons-estates.co.uk