



First Avenue

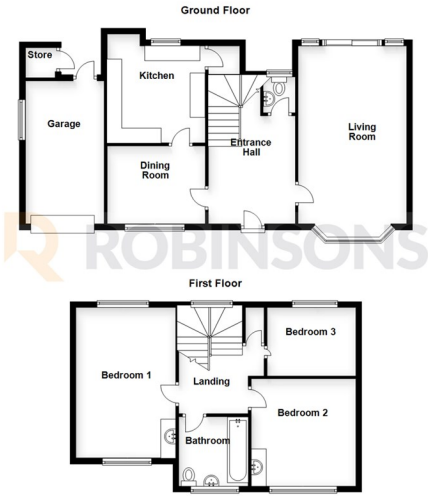
Dunstable, LU6 3AJ

Asking Price £525,000

- SOUTH WEST DUNSTABLE
- LARGE REAR GARDEN
- GARAGE
- DUAL ASPECT LIVING ROOM
- THREE BEDROOM DETACHED
- POTENTIAL TO EXTEND STPP
- DRIVEWAY FOR SEVERAL CARS
- THREE GENEROUS BEDROOMS



Floor Plan



Area Map



Energy Efficiency Graph

Energy Efficiency Rating		Environmental Impact (CO ₂) Rating	
	Current	Potential	
Very energy efficient - lower running costs			Very environmentally friendly - lower CO ₂ emissions
(92 plus) A			(82 plus) A
(81-91) B			(81-91) B
(69-80) C			(69-80) C
(55-68) D			(55-68) D
(39-54) E			(39-54) E
(21-38) F			(21-38) F
(1-20) G			(1-20) G
Not energy efficient - higher running costs			Not environmentally friendly - higher CO ₂ emissions
England & Wales EU Directive 2002/91/EC		England & Wales EU Directive 2002/91/EC	



These particulars, whilst believed to be accurate are set out as a general outline only for guidance and do not constitute any part of an offer or contract. Intending purchasers should not rely on them as statements of representation of fact, but must satisfy themselves by inspection or otherwise as to their accuracy. No person in this firm's employment has the authority to make or give any representation or warranty in respect of the property.

20 West Street, Dunstable,
Bedfordshire, LU6 1SX

20 West Street, Dunstable,
Bedfordshire, LU6 1SX

robinsons-estates.co.uk
sales@robinsons-estates.co.uk