

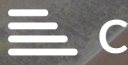


Great Northern Road

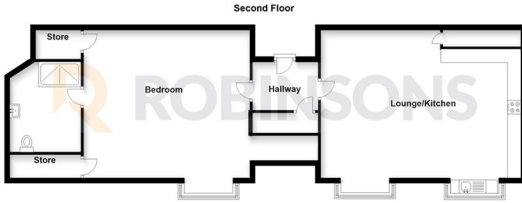
Dunstable, LU5 4BT

£160,000

- PRIORITY AREA
- £110 PCM SERVICE CHARGE
- IMMACULATE CONDITION
- COVERS WHOLE OF TOP FLOOR
- OPEN PLAN
- IDEAL FIRST TIME BUY
- £200 ANNUAL GROUND RENT
- LARGE THROUGHOUT
- 94 YEARS REMAINING ON THE LEASE
- MUST BE VIEWED



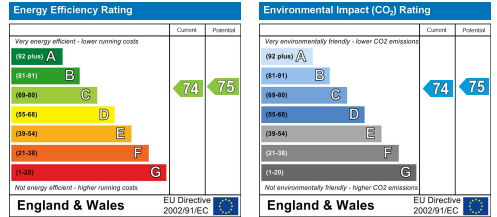
Floor Plan



Area Map



Energy Efficiency Graph



These particulars, whilst believed to be accurate are set out as a general outline only for guidance and do not constitute any part of an offer or contract. Intending purchasers should not rely on them as statements of representation of fact, but must satisfy themselves by inspection or otherwise as to their accuracy. No person in this firm's employment has the authority to make or give any representation or warranty in respect of the property.

20 West Street, Dunstable,
Bedfordshire, LU6 1SX

20 West Street, Dunstable,
Bedfordshire, LU6 1SX

robinsons-estates.co.uk
sales@robinsons-estates.co.uk