



## Clifton Road

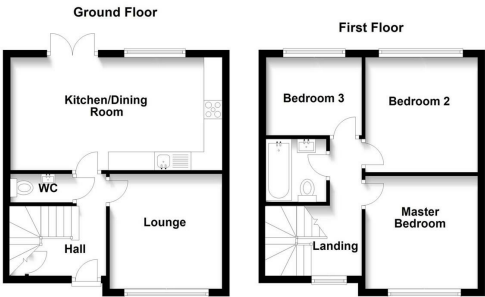
Dunstable, LU6 1LU

Asking Price £300,000

- DETACHED THREE BEDROOMS
- 18' KITCHEN DINER
- AMPLE PARKING
- WALK TO TOWN CENTER
- CLOAKROOM WC
- MODERN LANDSCAPE ENCLOSED GARDEN
- CCTV SYSTEM
- HIVE HEATING / LIGHTING SYSTEM
- MODERN FAMILY BATHROOM
- BUILT 2016



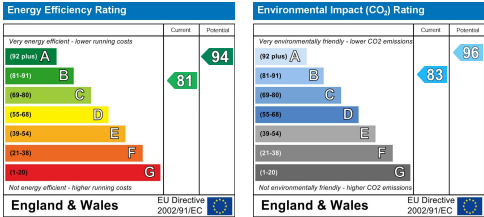
Floor Plan



Area Map



Energy Efficiency Graph



These particulars, whilst believed to be accurate are set out as a general outline only for guidance and do not constitute any part of an offer or contract. Intending purchasers should not rely on them as statements of representation of fact, but must satisfy themselves by inspection or otherwise as to their accuracy. No person in this firms employment has the authority to make or give any representation or warranty in respect of the property.

20 West Street, Dunstable,  
Bedfordshire, LU6 1SX

20 West Street, Dunstable,  
Bedfordshire, LU6 1SX

robinsons-estates.co.uk  
sales@robinsons-estates.co.uk