

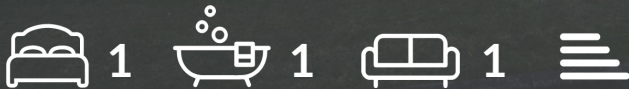


Aspley Close

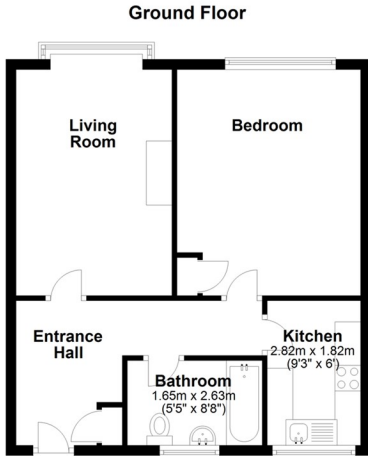
Luton, LU4 0SG

Asking Price £120,000

- NO UPPER CHAIN
- CLOSE TO M1
- GROUND FLOOR
- COMMUNAL GARDENS
- BATHROOM
- IDEAL BUY TO LET
- 113 YEAR LEASE(VENDOR ADVISED)
- GAS CENTRAL HEATING
- CUL-DE-SAC
- SEPARATE KITCHEN



Floor Plan

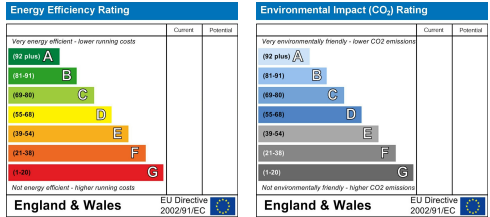


SELL YOUR PROPERTY WITH US FOR ONLY 1% PLUS VAT
Plan produced using PlanUp.

Area Map



Energy Efficiency Graph



These particulars, whilst believed to be accurate are set out as a general outline only for guidance and do not constitute any part of an offer or contract. Intending purchasers should not rely on them as statements of representation of fact, but must satisfy themselves by inspection or otherwise as to their accuracy. No person in this firm's employment has the authority to make or give any representation or warranty in respect of the property.

20 West Street, Dunstable,
Bedfordshire, LU6 1SX

20 West Street, Dunstable,
Bedfordshire, LU6 1SX

robinsons-estates.co.uk
sales@robinsons-estates.co.uk