



34 Benning Avenue

Dunstable, LU6 1PJ

Asking Price £250,000

**SOLD AT ASKING PRICE WITH MORE BUYERS
WAITING FOR SIMILAR PROPERTIES WE URGENTLY
REQUIRE MORE! CALL US TODAY TO BOOK YOUR
VALUATION!**

- VERY WELL PRESENTED
- EXTENDED END OF TERRACED
- OFFERED WITH NO UPPER CHAIN
- LARGE KITCHEN/DINING/FAMILY ROOM
- GENEROUS GARDEN
- AMPLE OFF STREET PARKING
- CLOAKROOM WC
- SIDE ACCESS
- TWO BEDROOMS
- LARGE BATHROOM

Viewing

Please contact our us on 01582 661112 if you wish to arrange a viewing appointment for this property or require further information.



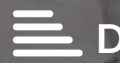
2



1

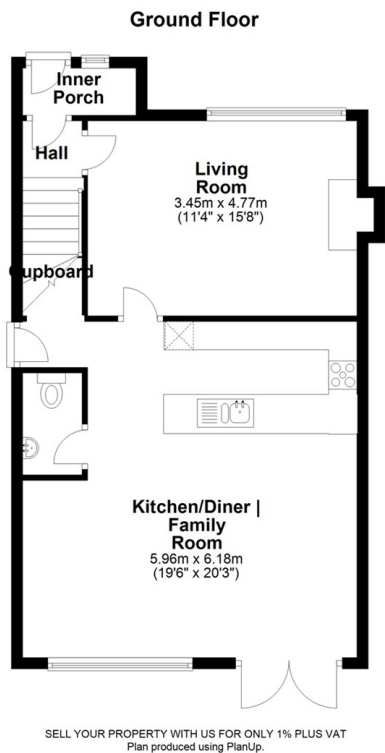


2



D

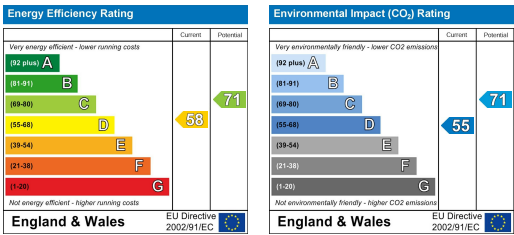
Floor Plan



Area Map



Energy Efficiency Graph



These particulars, whilst believed to be accurate are set out as a general outline only for guidance and do not constitute any part of an offer or contract. Intending purchasers should not rely on them as statements of representation of fact, but must satisfy themselves by inspection or otherwise as to their accuracy. No person in this firms employment has the authority to make or give any representation or warranty in respect of the property.

20 West Street, Dunstable,
Bedfordshire, LU6 1SX

P: 01582 661112
F: 01582 661119

robinsons-estates.co.uk
sales@robinsons-estates.co.uk